

Category 6x Modular Plugs Installation Guide



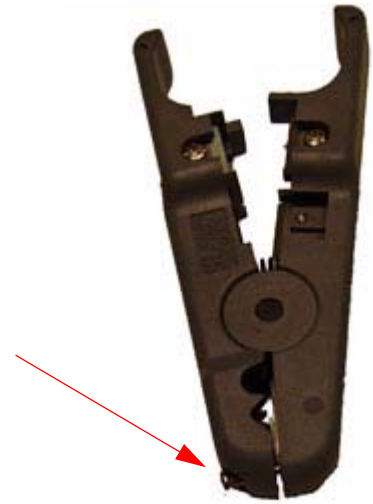
Adjust your cable stripper so that it cuts the outer casing of the cable, but does not cut into the inner casing of the 4 pairs of wires.

After stripping off some of the outer casing, carefully inspect the inner wires to see if there are any knicks on the inner casing.

The cable stripper can be adjusted by adjusting the screw.

Note: Knicking the inner wires can reduce the signal.

Adjust the amount of stripping by adjusting the screw



Strip off approximately 2 inches of the outer casing with the stripper.

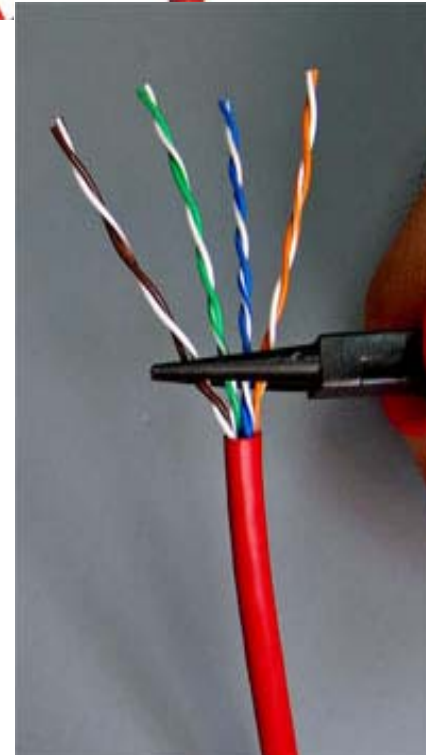
NOTE: If you are going to use a cable boot, now is the time to slide it over the cable.



Spread out the wires, as shown in the picture on the right. The important pairs are the green and blue pair. If you look carefully at the wires, you will see that these two pairs are twisted more than the brown and orange pairs. The more twisting of the pair, will result in a higher quality signal.

Using cable puller pliers (not the same as needle nose pliers - Cable puller pliers have tapered round arms) and loosely hold the pairs 1/4 inch above the end of the outer casing. Now untwist all four pairs while continuing to hold the four pairs with the pliers. Untwist the pairs down to the pliers.

Cable puller pliers will help prevent damage to the pairs which can reduce the signal.



If you fail to use cable pulling pliers, you risk untwisting the wires inside the outer casing, and if this happens, you will end up with a poor signal.

NOTE: This is one of the most common mistakes made with terminating Cat 6 modular plugs.

Listed on the right is the wiring schematic for the Cat 6 modular plug insert. The wiring is for EIA/TIA 568-B-2 wiring standard. We do not recommend using 568A wiring standard.

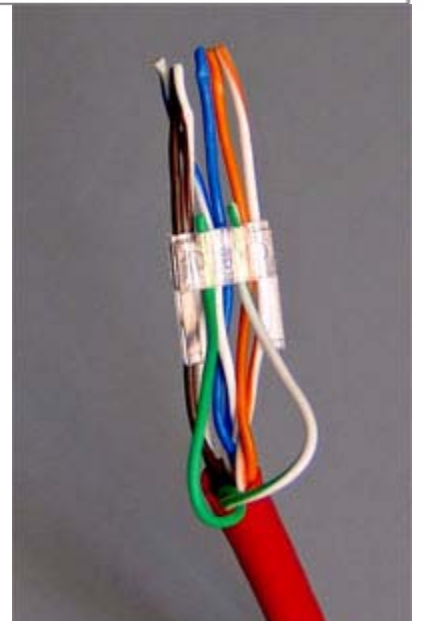
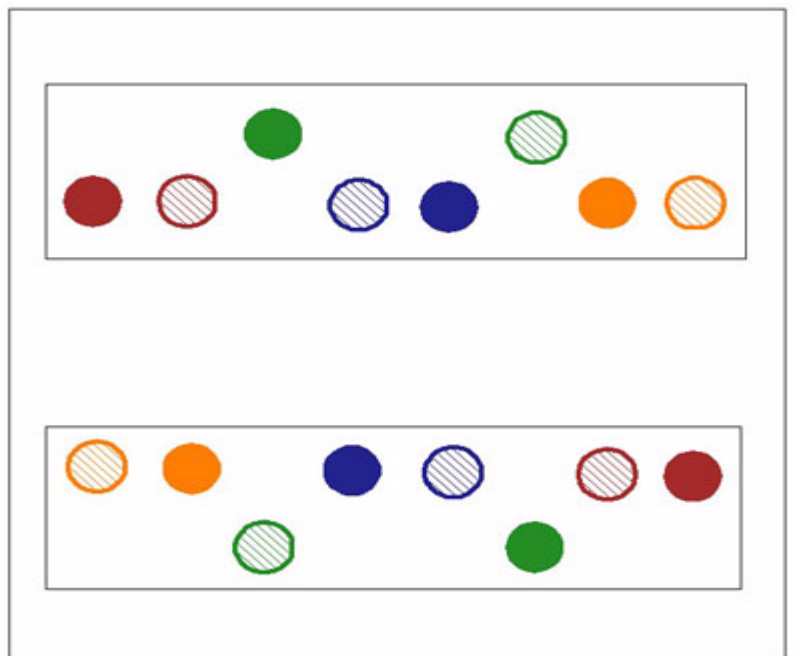
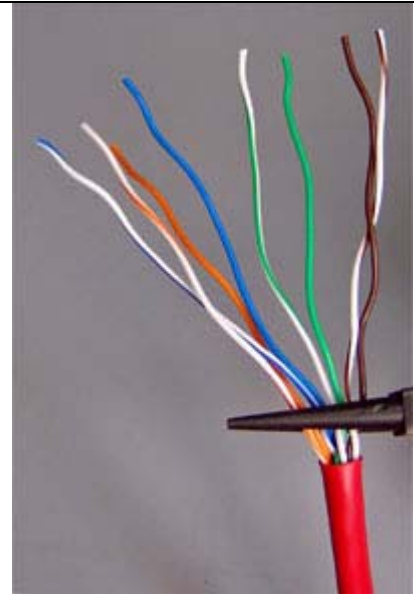
The pictures on the right shows how to wire the modular plug insert from either direction.

We strongly recommend that you insert brown, blue, and orange pair first. Insert the green pair last.

Before inserting the green pair we recommend that you add an extra 1/2 or full twist to the green pair to ensure the best possible signal quality.

Place the modular plug insert as high up as possible. This will make your job much easier.

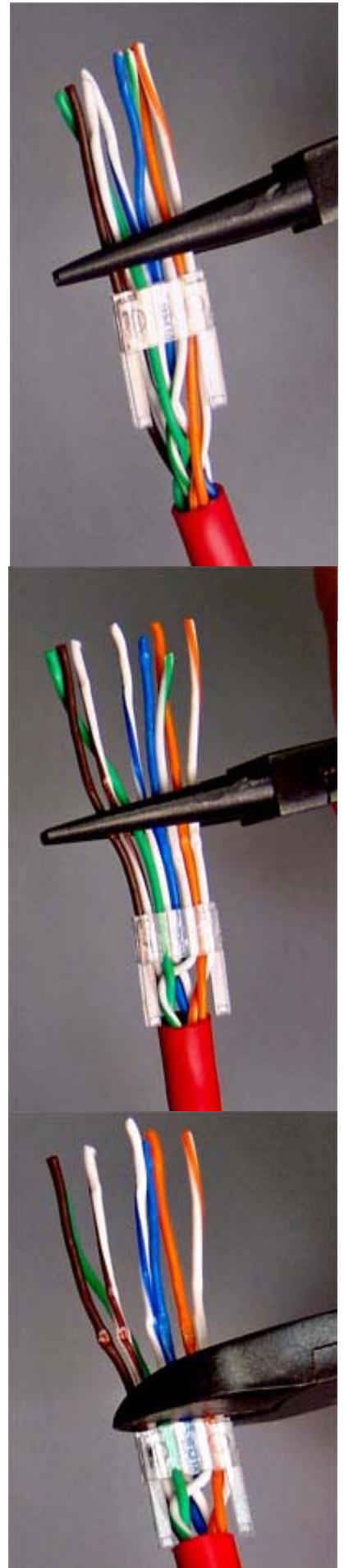
When you insert the wires into the modular plug insert, do NOT slide the insert all the way down. If you were to slide the insert down while inserting the wires, it would make your job very difficult. We will slide the insert down in the next step.



While holding the wires with the cable pulling pliers, push the modular plug insert down as far as possible. You can hold the wires as hard as you want. Do not worry about damaging the wires.

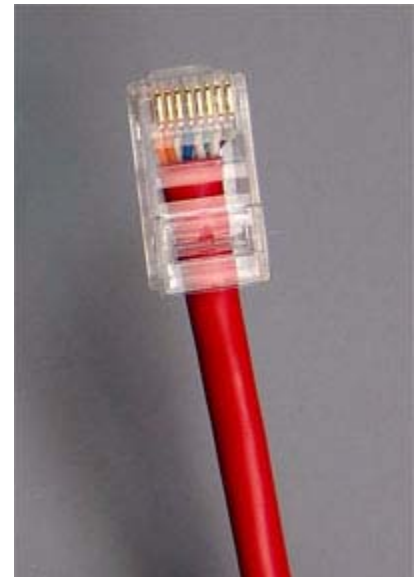
Ideally, the space between the outside wire casing and wire insertion point should be around 1/4 inch.

Cut off the excess wire with a Sharp pair of precision wire cutters. Dull wire cutters can leave stray pieces of wire that can come in contact with other wires and ruin the termination.



Insert the modular plug insert into the Cat 6 modular plug body.

If the blades of the modular plug body (as pictured) are facing you, the ORANGE wires should be on the LEFT, and the GREEN pair is facing the modular plug tab.



Now crimp the modular plug with any good quality modular plug crimpers. High quality modular plug crimpers result in better quality signals.

These modular plugs do not require special crimping tools. Standard modular plug crimpers will work.

Once you have crimped the modular plug, you can slide the optional cable boot up and over the modular plug.



Next you want to test the wiring to make sure that it is wired correctly, and that you don't have any shorts, opens, or crosses.

This can be done with any inexpensive continuity tester.

Finally, you can test it with a Fluke or HP OTDR tester to ensure that it meets Cat 6 or Cat 6A standards.





Part Number	Description	Weight	Dimensions	Package	Case
10805	MaxBit Cat 6x Modular plugs (pkg of 100)	0.32	5x4x1.25	10	50
10806	MaxBit Cat 6x Modular Plugs (pkg of 100) SHIELDED	0.54	5x4x1.25	10	50
Part Number	Description	Weight	Dimensions	Package	Case
24160	MaxBit Cable Pulling Pliers	0.25	8X2.75X0.75	10	50
24163	MaxBit Precision Cutters	0.25	8x2.75x0.75	10	50
24005	MaxBit Professional Modular Crimping Tool	1.20	11.5x4.75x1.0	5	50
24002	MaxBit Quality Modular Plug Crimping Tool	0.66	7.5x3.75x1.0	5	60
23040	MaxBit Networking Continuity Tester	0.60	6.25x4.5x1.75	10	50



Catskill Supply Inc
 PO Box 159
 Hannacroix NY 12087
 (888) 475-5044
www.catskillsupply.com